

## Cor-70 Hidden Sash System with thermal break

A new Euro-Groove concealed sash window design with slim profiles that are characterized by a seen surface of only 66 mm from the exterior that maximises the glazing surface and is able to reach 85% of the total window glazing. This characteristic provides an extraordinary increase in luminosity in the inside of the dwelling.

Its design allows for the hidden sash to be maintained from the outside in such a way that it is impossible to distinguish from the fixed zones that the opening has and therefore achieving perfect homogeneity in the façade's style.

A 35 mm thermally broken area and the insertion of polyolefin sponge in the frame and sash allows it to reach values of up to 1,1 W/m<sup>2</sup>K of transmission in the space and therefore maximising its energy efficiency. These high thermal performances are completed with an increased level of sound insulation that this system achieves thanks to the possibility of installing glazing units of up to 40 mm in thickness.

The classifications achieved in the AEV tests go to prove that the system has excellent water tightness, air permeability and wind resistance values in order to obtain increased protection against the most unfavourable weather conditions.



# Cor-70 Hidden Sash System with thermal break

## Transmittance

Uw from 1,1 (W/m²K)

Please consult typology, dimensions and glass

## Acoustic insulation

Maximum glazing: 40 mm.

Maximum acoustic insulation **Rw=46 dBA**

## Finishes

Possibility of dual colour

Colour powder coating (RAL, mottled and rough)

Wood effect powder coating

Anti-bacterial powder coating

Anodized



## Categories achieved at test centre

Air permeability  
(EN 12207:2000): Class 4

Water tightness  
(EN 12208:2000): Class E1650

Wind resistance  
(EN 12210:2000): Class C5  
Reference test 1,23 x 1,48 m. 2 sashes

Possibility of incorporating hardware with concealed hinges.

Possibility of incorporating security hardware  
Evo Security.



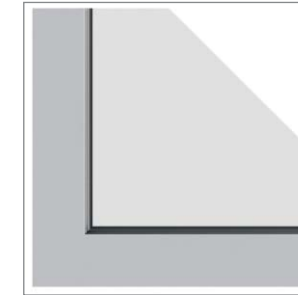
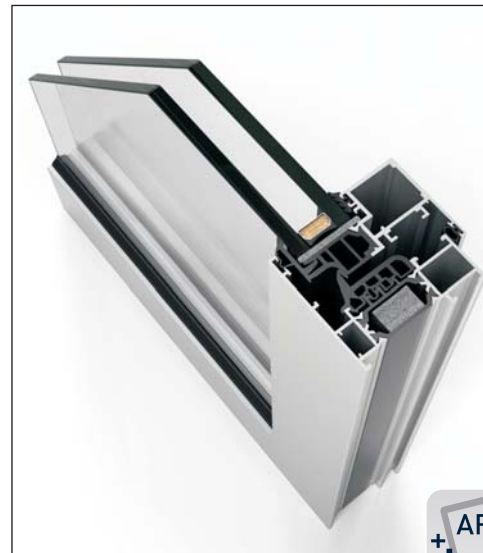
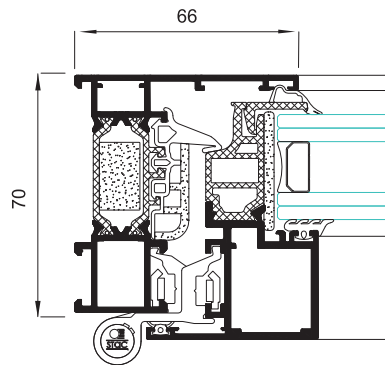
## Sections

Frame 70 mm.  
Sash 70 mm.

## Profile thickness

Window 1,9 mm.

Polyamide strip length 35 mm.



## Opening possibilities



**Open in:**  
Practicable 1 & 2 sashes,  
Turn-tilt 1 & 2 sashes  
Hinged

## Maximum dimensions

Width (L) = 1.300 mm.  
Height (H) = 2.400 mm.  
Single sash window, turn-tilt

Please consult regarding maximum weight and dimensions for other opening types

## Maximum weight/sash

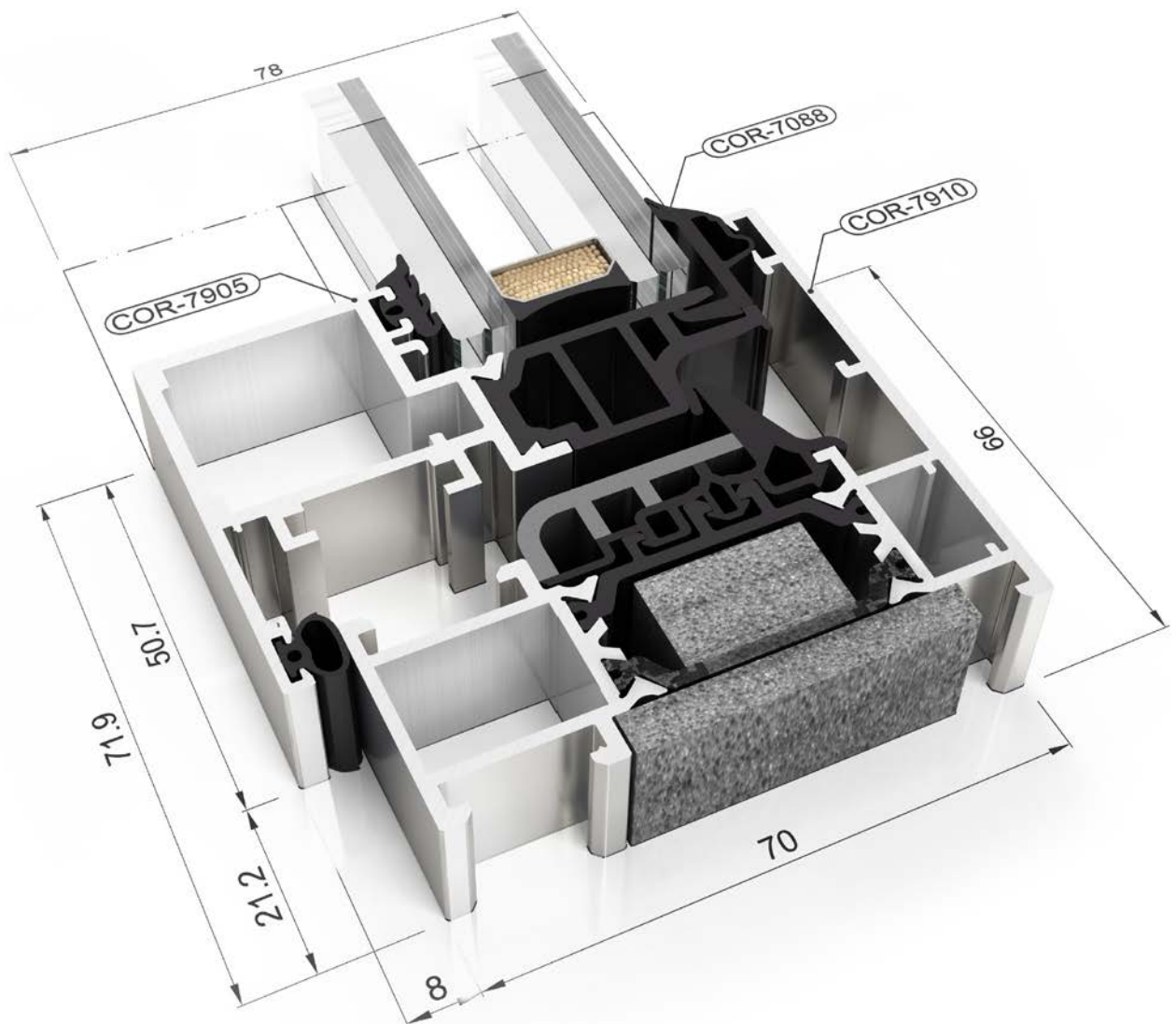
120 Kg.





Sistema  
▶ **COR 70 HOJA OCULTA**

System  
▶ **COR 70 HIDDEN SASH**





Muestra ensayada por / Sample tested by  
**ALUMINIOS CORTIZO S.A.U.**



### Transmitancia / Transmittance

**$U_w \geq 1,0$  (W/m<sup>2</sup>K)**

Consultar tipología, dimensión y vidrio.  
Consult typology, dimensions and glass.

### CTE - Apto para zonas climáticas\*: $\alpha$ A B C D E

\*En función de la transmitancia del vidrio.

### Aislamiento acústico / Acoustic insulation

Máximo acristalamiento  
Maximum glazing **40 mm**

Máximo aislamiento acústico  
Maximum acoustic insulation **R<sub>w</sub> = 46 dB**

### Secciones / Sections

Marco / Frame	70 mm	Ventana / Window	1,9 mm
Hoja / Sash	70 mm		

Longitud varilla poliamida  
Polyamide strip length **35 mm**

Presenta la posibilidad de incorporar herraje con bisagras ocultas y herraje de seguridad Evo Security.  
Possibility of incorporating hardware with concealed hinges and security hardware - Evo Security.

### Categorías alcanzadas en banco de ensayos Categories achieved at test centre

Permeabilidad al aire / Air permeability  
**(UNE-EN 12207:2000): Clase / Class 4**

Estanqueidad al agua / Water tightness  
**(UNE-EN 12208:2000): Clase / Class E1650**

Resistencia al viento / Wind resistance  
**(UNE-EN 12210:2000): Clase / Class C5**

Ensayo de referencia 1,23 x 1,48 m, 2 hojas.  
Reference test 1,23 x 1,48 m, 2 sashes.

### Acabados / Finishes

Posibilidad bicolor / Possibility of dual colour  
Lacado colores (RAL, moteados y rugosos) / Colour powder coating (RAL, mottled & rough)  
Lacado imitación madera / Wood effect powder coating  
Lacado antibacteriano / Anti-bacterial powder coating  
Anodizado / Anodized

### Posibilidades de apertura Opening possibilities

Apertura interior: practicable de 1 y 2 hojas, oscilo-batiente de 1 y 2 hojas y abatible.

Open in: Practicable 1 & 2 sashes, turn-tilt 1 & 2 sashes, hinged.

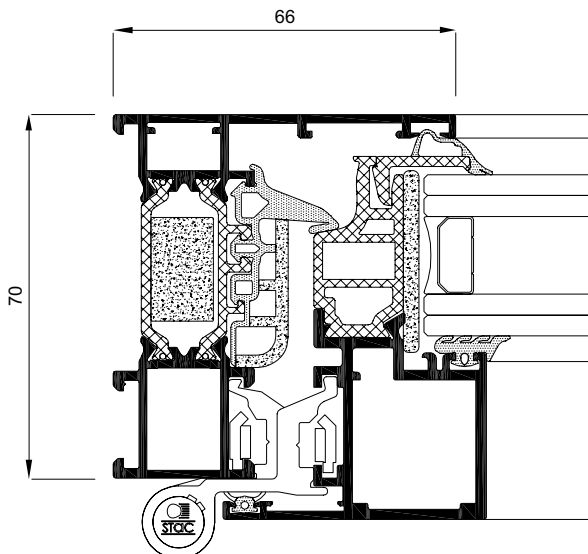
### Dimensiones máximas/hoja Maximum dimensions/sash

Ancho / Width (L) = 1.300 mm

Alto / Height (H) = 2.400 mm

Consultar peso y dimensiones máximas según tipología.  
Consult maximum weight and dimensions in accordance to typology.

**Peso máximo/hoja** 120 Kg.  
**Maximum weight/sash**



**Diego Piñero Janeiro**  
Director de I+D+i / R&D Manager