

Casement System



Casement System

Transmittance

Uw from 1,0 (W/m²K)

Please consult typology, dimensions and glazing

Acoustic insulation

Maximum glazing: 44 mm

Maximum acoustic insulation **Rw = 45 dBA**

Finishes

Possibility of dual colour

Colour powder coating (RAL, mottled and rough)

Wood effect powder coating

Anti-bacterial powder coating


Anodized

Categories achieved at test centre

Air permeability
(EN 12207): Class 4

Water tightness
(EN 12208): Class E1200

Wind resistance
(EN 12210): Class CE 2400
Reference test 1,438 x 1,355 m, 1 sash + 1 Fixed

Security test
(PAS 24:2016): Apt **PAS24** 
Reference test 1,438 x 1,330 m, 1 sash + 1 Fixed



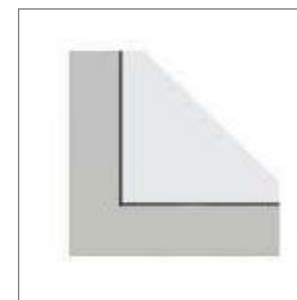
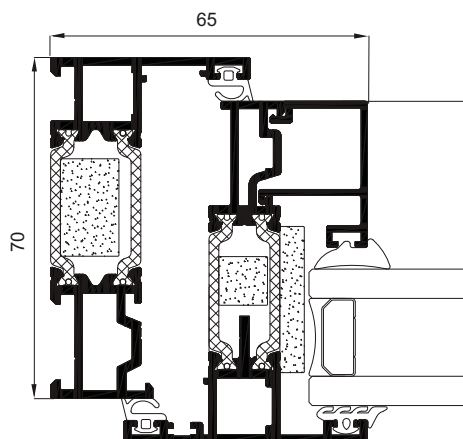
Sections

Frame 70 mm
Sash 70 mm

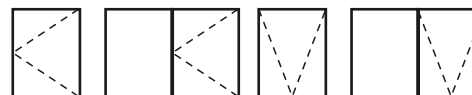
Profile thickness

Window 1,6 mm

Polyamide strip length 32 mm



Opening possibilities



Outward opening:
side hung and top hung

Maximum dimensions/sash

Slim sash

Side hung

Width (L) = 700 mm

Height (H) = 1300 mm

Top hung

Width (L) = 1200 mm

Height (H) = 1300 mm

HD sash

Side hung

Width (L) = 750 mm

Height (H) = 1750 mm

Top hung

Width (L) = 1800 mm

Height (H) = 1800 mm

Maximum weight/sash

Side hung

Slim 35 Kg

HD 42 Kg

Top hung

50 Kg

100 Kg

Consult maximum weight and dimensions according to typologies